



SERVICE BULLETIN NZ SB142

Date: 26 May 2009

To: Snorkel Product owners, Snorkel Dealers

Attention: Service Managers

Units affected: All TM12 units built in New Zealand as per the list attached.

MANDATORY MODIFICATION

This Bulletin is to inform you of a field modification that is required on all Snorkel TM12 units built in New Zealand prior to NZ090301 [see attached for a list of serial numbers].

These machines have the incorrect grade of bolts fitted at the bottom of the mast assembly. These bolts must be replaced with a 10.9. grade not 8.8 which are currently fitted.

The new bolts are part # 3616-10030, the new nut is part # 13323-10. These items will be supplied by Snorkel free of charge.

PROCEDURE

Drive the machine onto some planks of wood as shown to raise the machine enough to gain access to the bottom of the Mast [refer fig.1].

There are a total of 11 bolts at the bottom of the mast assembly however this procedure requires that only 9 of them are to be replaced.

The bolts at the rear on either side will remain GR8.8 [refer to fig 2].

In order to gain access to the bolts it will be necessary to remove the front cover and raise the platform up.

Note: Never perform service work on the elevating assembly while the platform is raised without first supporting the platform with an overhead crane or similar.

Remove and replace the bolts one at a time, note that the new GR10.9 bolts must be done up to a torque setting of 69Nm [50lbft].

Once the bolts have been replaced and are all done up to the correct torque setting the machine can be returned to service.



Fig.1 Machine driven onto planks of wood.



Fig.2 Location of left hand mast bolts. Note the one at the rear does not get changed.



Fig 3. Location of right hand mast bolts. Note the one at the rear does not get changed.



Fig 4. Location of front bolts [to be changed].

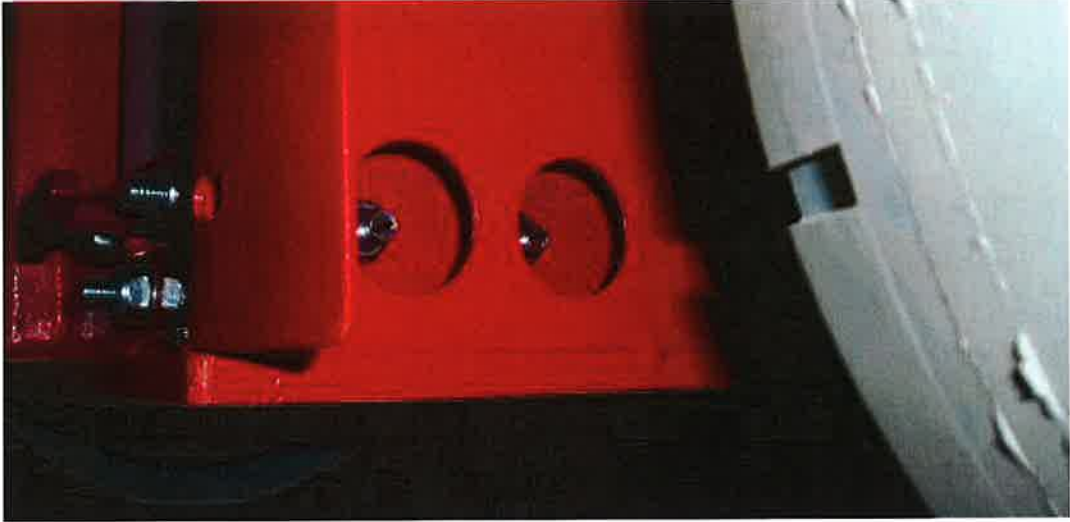


Fig. 5 Access to the side bolts can be gained through the holes in the side of the chassis.

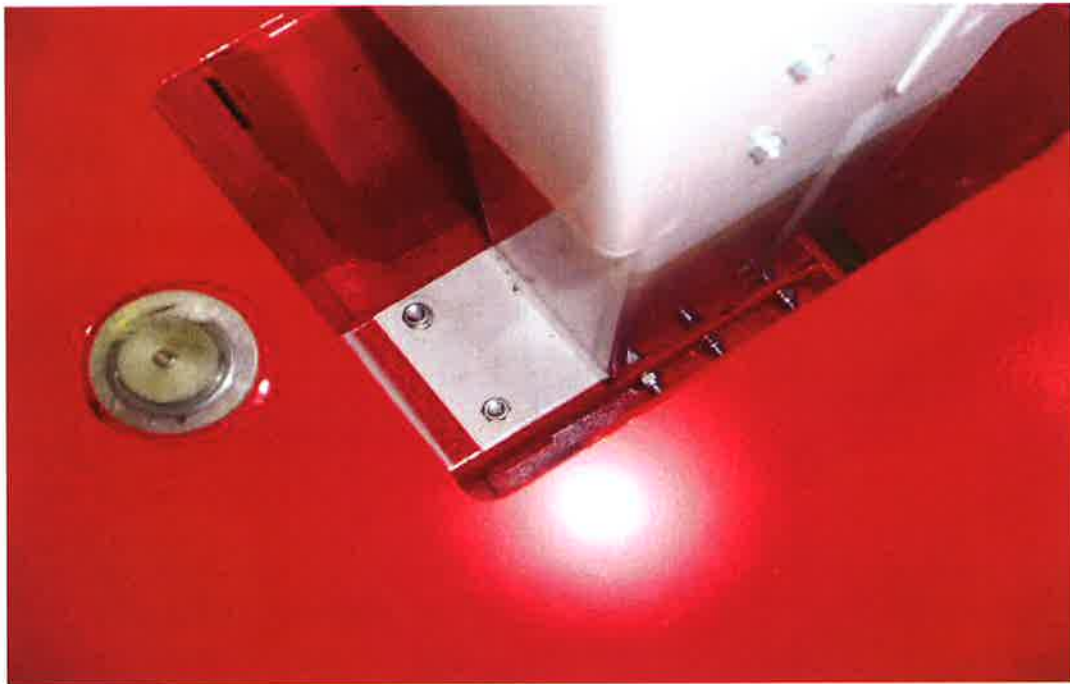


Fig.6 location of rear mast bolts [to be changed].

Affected Serial Numbers and locations

NZ080716	AUS	NZ080921	NZ
NZ080717	AUS	NZ080922	NZ
NZ080718	AUS	NZ080923	NZ
NZ080719	AUS	NZ080927	NZ
NZ080720	AUS	NZ081016	NZ
NZ080721	AUS	NZ081018	NZ
NZ080722	AUS	NZ081021	NZ
NZ080723	AUS	NZ081019	USA
NZ080724	AUS	NZ081020	USA
NZ080725	AUS	NZ081022	USA
NZ080726	AUS	NZ081023	USA
NZ080727	AUS	NZ081024	USA
NZ080728	AUS	NZ081025	USA
NZ080729	AUS	NZ090403	USA
NZ080730	AUS	NZ090404	USA
NZ080731	AUS	NZ090406	USA
NZ080732	AUS	NZ090407	USA
NZ080733	AUS	NZ090408	USA
NZ080734	AUS	NZ090411	USA
NZ080735	AUS	NZ090418	USA
NZ080736	AUS	NZ090419	USA
NZ080737	AUS	NZ090420	USA
NZ080738	AUS	NZ090421	USA
NZ080739	AUS	NZ090423	USA
NZ080740	AUS	NZ090424	USA
NZ080924	AUS	NZ090425	USA
NZ080925	AUS	NZ090426	USA
NZ080926	AUS	NZ090427	USA
NZ080928	AUS	NZ090507	USA
NZ080929	AUS	NZ090508	USA
NZ080930	AUS	NZ090509	USA
NZ080931	AUS		
NZ080932	AUS		
NZ080933	AUS		
NZ080934	AUS		
NZ080935	AUS		
NZ081017	AUS		