



SERVICE BULLETIN NZ SB134

To: Snorkel Dealers and Owners of MHP16T's

Attention: Service Manager

Units affected: MHP16T Trailers

MANDATORY INSPECTION

This Bulletin is to inform you of a MANDATORY INSPECTION that is required on all MHP16T trailers in the field.

We have had reports of cracks appearing in the "outer boom" where it pivots at the Column.

Please carry out a through inspection of the outer boom pivot boss area for any evidence of cracking [refer fig 1 & 2].

Note: In order to inspect this area correctly the "boom end cover" must be removed. Removing this cover will expose the inside of the outer boom.

If cracks are found remove the machine from service and contact an approved Snorkel Service agent for an appropriate repair procedure.

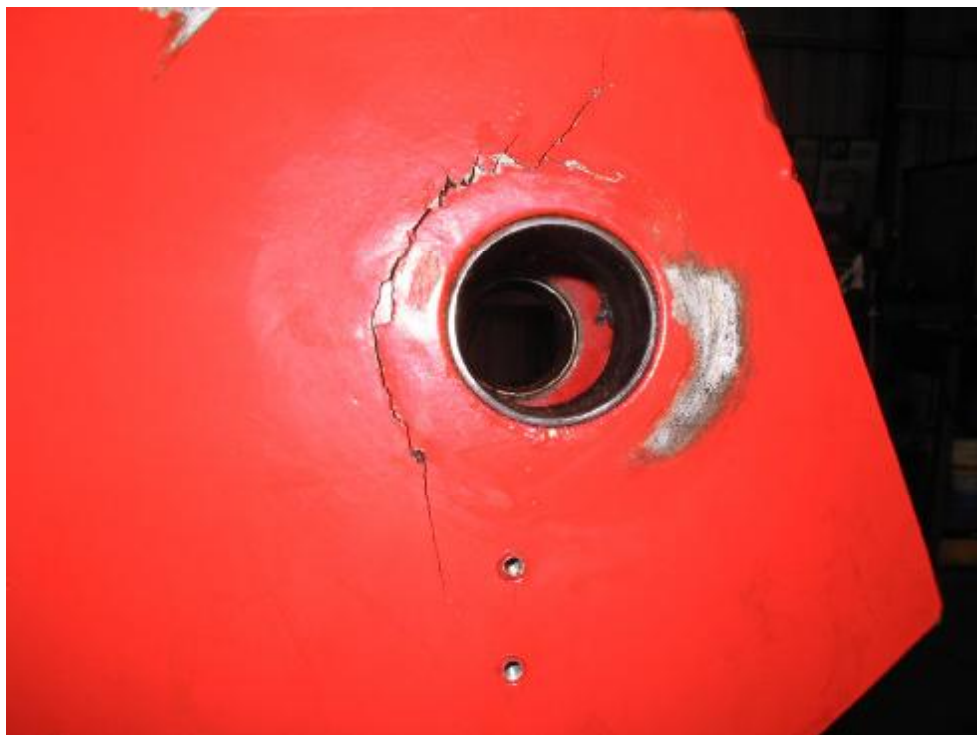


Figure 1



Figure 2